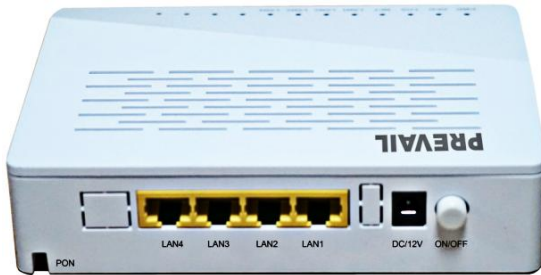


## WXGP4200-S Series 10G XPON ONU



**WXGP4200-S** series terminal products are mainly used for FTTH, FTTB, FTTC and other scenarios. They can be used for optical fiber to building network access, video monitoring, WIFI hot spot deployment and other applications. Based on 10G-XPON technology, 10 Gigabit of uplink bandwidth is provided for users to meet ultra-high bandwidth business needs.

### Performance Features

- ✧ Uses 10G-XPON to connect to meet IEEE802.3av standard.
- ✧ PON port supports asymmetric (upstream 1.25 Gbps/2.5Gbps, downstream 10 Gbps) transmission mode.
- ✧ Provides 4 GE Ethernet user interfaces.
- ✧ Supports layer 2 speed-limiting forwarding.
- ✧ Supports Ethernet line performance statistics.
- ✧ Powerful QOS capability to ensure the quality of service in a multi-business environment.
- ✧ Support OAM remote management and configuration.

### Technical Specifications

Item	Parameter	Parameter description	
<b>Interface specification</b>	PON port	1 * SC/PC PON optical port, meet PRX30 PR30 standard	
<b>PON port rate</b>	Asymmetric mode	Down stream rate 10Gbps, upstream rate 1.25Gbps/2.5Gbps	
<b>Ethernet Interface</b>	Provide four 10 / 100 / 1000 Base-T Ethernet interfaces		
<b>PON optical port parameter</b>	Asymmetric mode	Wavelength	Tx 1270nm Rx 1577nm
		Tx optical power	0.62~5.62dBm
		Rx sensitivity	-29dBm
		Saturation optical power	-9dBm
<b>VLAN</b>	Support IEEE 802.1Q VLAN standard, The number of VLANs supported is 4096, Support VLAN conversion and VLAN aggregation		
<b>Multicast</b>	Support IGMP V1 / V2 / V3 protocol, Support IGMP snooping Support controllable multicast		

	Support multicast VLAN and cross VLAN multicast replication
--	---

Item	Parameter	Parameter description	
<b>Qos</b>	Support 802.1p standard		
	Supports up to eight priority queues		
	Supports QoS classification policies based on ports, MAC addresses, VLAN IDs, IPv4 and IPv6 Differential Services, etc.		
	Supports SP, WRR and SP+WRR queue scheduling algorithms		
<b>Management</b>	Management Mode	Support DMA, Remote Management Support CLI, WEB local management	
	Function Management	Status monitor, configuration management, alarm management, log management	
<b>Physical Feature</b>	Housing	Plastic housing	
	Power Supply	External 12VDC/1.5A power supply adapter	
	Power consumption	<10W	
	Environmental Specifications	Operating temperature	-40°C ~60°C
		Storage temperature	-40°C ~85°C
		Operating humidity	10%~90% (Non-condensing)
Storage humidity		5%~95%	